

Tightening torques

		Nm	(kpm)
Hex. bolts of steering knuckle arm	M 12 x 1.5	80	(8)
Hex. nut of guide joint	M 12 x 1.5	60	(6)
Hex. nut of supporting joint	M 14 x 1.5	80	(8)

Special tools

Spring tensioner for front spring	115 589 06 31 00
Remover for supporting and guiding joint	115 589 02 33 00

Notes

When the work is done above the pit, do not mount supports for jacking-up the vehicle as usual on frame floor, but outside under lower control arms. The front shock absorbers should remain installed.

If, for example when working on the lifting platform, the lower control arm cannot be supported, secure by inserting spring tensioner (74) (Figs. 1 and 2).

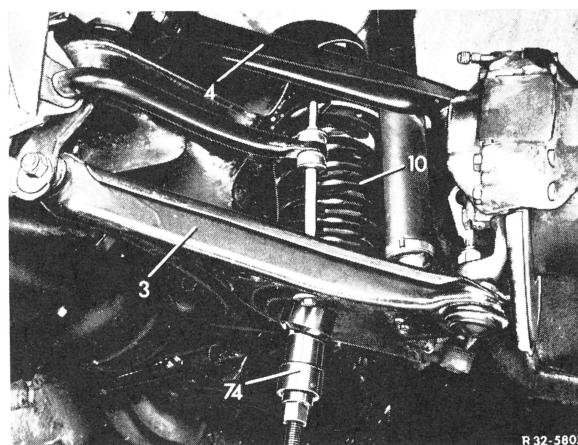


Fig. 2

3 Lower control arm
4 Upper control arm
10 Front spring
74 Spring tensioner

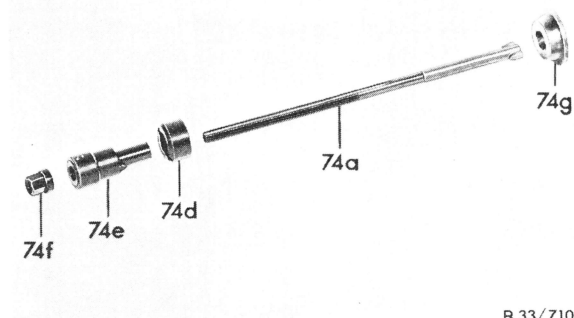


Fig. 1

74a Tensioning bolt
74d Lower thrust piece
74e Guide bushing
74f Collar nut
74g Upper thrust piece

For this purpose, place the additional plate of spring tensioner against spring dome of front axle carrier (Fig.3). In such a case, the shock absorber can also be removed

33.1 Removal and Installation of Steering Knuckle

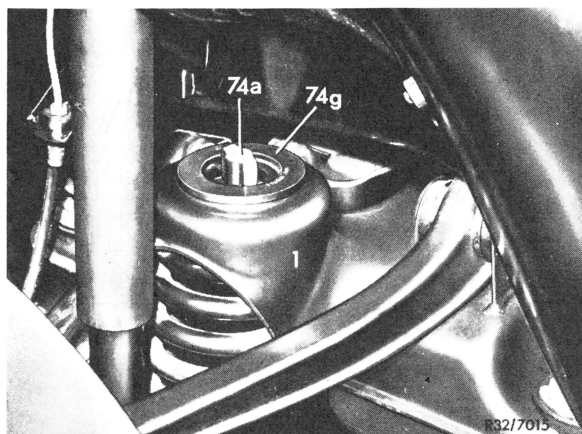


Fig. 3

- | | |
|----------------------|-----------------|
| 1 Front axle carrier | 74g Clamp plate |
| 74a Tensioning bolt | |

Never loosen the hex. nuts of the guide joint and the supporting joint with the shock absorber removed without inserting the spring tensioner.

Removal

- 1 Unscrew steering knuckle arm from steering knuckle (Fig. 4).

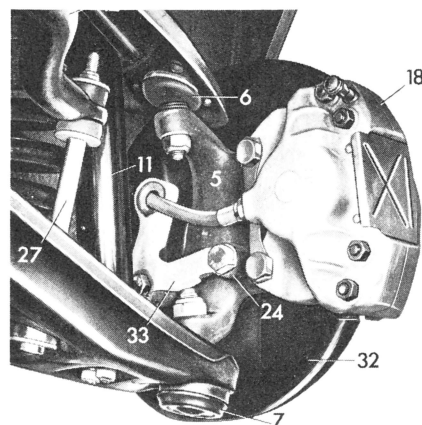


Fig. 4

- | | |
|-------------------------|-----------------------------------|
| 5 Steering knuckle | 24 Steering knuckle arm |
| 6 Guide joint | 27 Torsion bar connecting linkage |
| 7 Supporting joint | 32 Cover plate |
| 11 Front shock absorber | 33 Holder for brake hose |
| 18 Brake caliper | |

- 2 Separate brake line and brake hose from each other (Fig. 5).

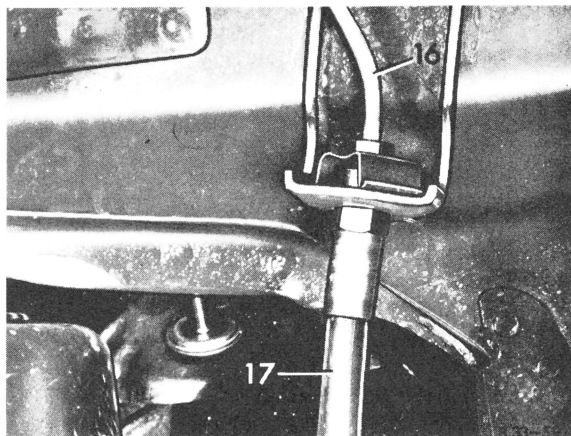


Fig. 5

- | | |
|---------------|---------------|
| 16 Brake line | 17 Brake hose |
|---------------|---------------|

- 3 Remove brake caliper ("Brakes, Steering" 42.1–100 or 42.2–100).

- 4 Unscrew hex. nut on supporting joint (7) and on guide joint (6).

- 5 Remove supporting joint and guide joint with remover (41) from steering knuckle (Fig. 6). Remove steering knuckle.

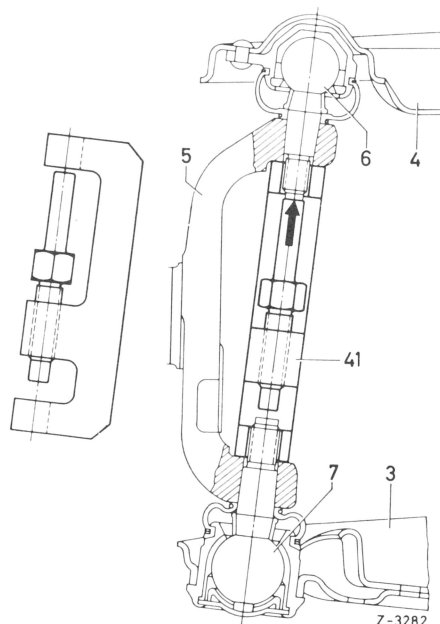


Fig. 6

- | | |
|---------------------|--------------------|
| 3 Lower control arm | 6 Guide joint |
| 4 Upper control arm | 7 Supporting joint |
| 5 Steering knuckle | 41 Remover |

Installation

6 Attach upper and lower control arm to steering knuckle. Make sure that the seats of the ball pins for the supporting and guiding joint are kept free of grease (Fig. 7).

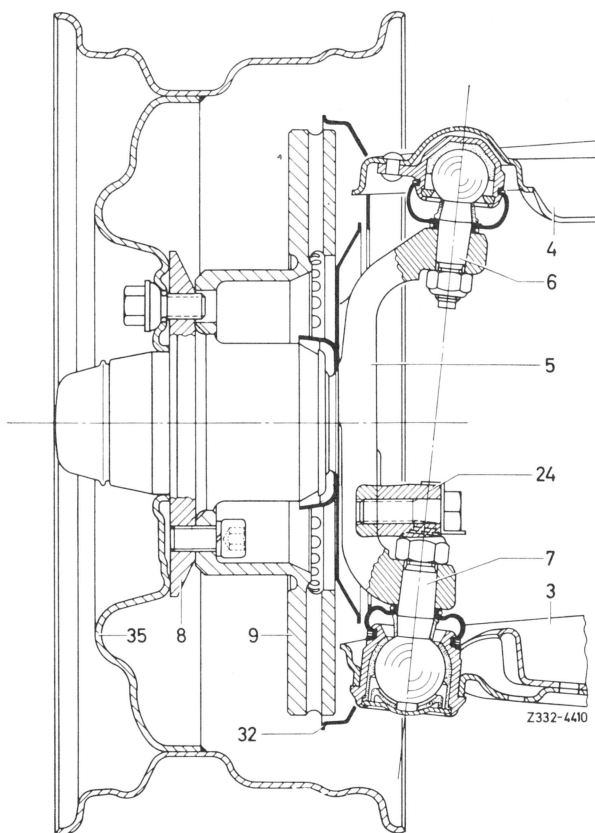


Fig. 7

Steering knuckle bearings

- | | |
|---------------------|-------------------------|
| 3 Lower control arm | 8 Front wheel hub |
| 4 Upper control arm | 9 Brake disc |
| 5 Steering knuckle | 24 Steering knuckle arm |
| 6 Guide joint | 32 Cover plate |
| 7 Supporting joint | 35 Disc wheel |

7 If the ball pin on the guide or supporting joint keeps turning when the hex. nut is being tightened, insert a spacing piece and pull the ball pin head into the steering knuckle by tightening the hex. nut (Fig. 8).

Then loosen hex. nut, remove spacing piece and tighten hex. nut to the prescribed torque.

The spacing piece can be self-made according to Fig. 9.

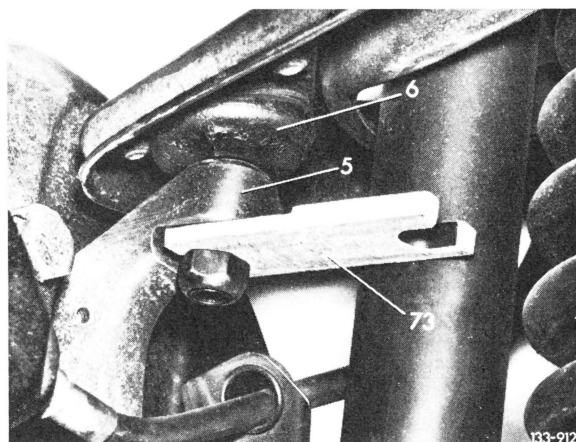


Fig. 8

5 Steering knuckle
6 Guide joint

73 Spacing piece

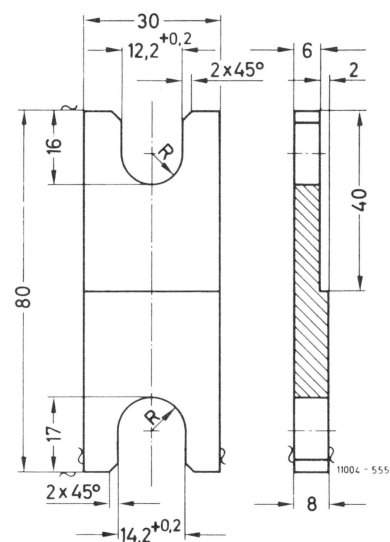


Fig. 9

8 Install brake caliper ("Brakes, Steering" 42.1–100 or 42.2–100).

9 Install steering knuckle arm using new holder for brake hose ("Brakes, Steering" 46.1–095 or 46.2–095, Fig. 5).

10 Connect brake pipe and brake hose to each other (Fig. 5).

11 Bleed braking system ("Brakes, Steering" 42.0–010).

12 Check and if necessary correct wheel adjustment at front axle (40.1–320).

13 Check headlight adjustment (Electrical System 82.1–250).